



# Ponemah v5.30

## Your Preclinical Study Solution for Safety Pharmacology and Toxicology Studies

Ponemah is a complete physiologic data acquisition and analysis solution, enabling researchers to confidently collect, accurately analyze, and quickly summarize study data. This solution is designed for the researcher whose protocol demands flexibility with accurate, continuous, and multi-channel acquisition and analysis in a validated environment.

### Efficient, Robust Data Collection

- Simplify setup with auto-recognition of connected hardware
- Automatically populate data acquisition settings with one click
- Collect physiologic data with implantable telemetry, external telemetry, or hardwired solutions

### Accurate, Flexible Data Analysis

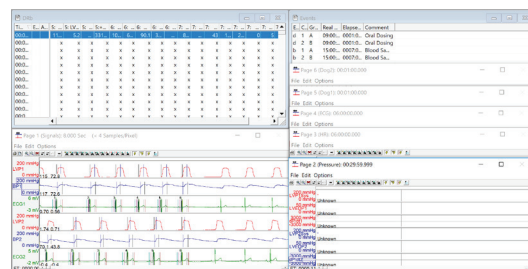
- Analyze data using a wide array of automated analysis modules designed for your applications
- Complete control of data analysis with adjustable settings to analyze physiologic signals
- Immediate results with real-time data analysis
- Automatic creation of calculated data to Microsoft Excel®

### Smart, Powerful Tools

- Customize parameter analysis to achieve accurate results
- Select data sections to view and reports using Data Reduction
- Execute automated, customizable searches to locate patterns and anomalies in your data with Data Insights™
- Automated alarms and email/text alerts
- Convert your data into a SEND domain format using the Ponemah SEND Module.

### Achieve Full GLP and 21 CFR Part 11 Compliance

- The Study Protocol and Data Security options available in Ponemah v5.30 were designed specifically for researchers working in a GLP environment
- DSI also provides validation and analysis assistance services



Collect, analyze, and summarize your preclinical study data.

## Ponemah 5.30 New Features:

### SEND 3.1

- Easily convert your Data Reduction output to a SEND-compliant output with a few mouse clicks
- Supports the following SEND domains:
  - ECG Test Results – EG
  - Cardiovascular Test Results – CV
  - Respiratory Test Results – RE
  - Vital Signs - VS
- Integrated with Study Protocol Option to reduce manual data entry
- Compatible with major LIM Systems and SEND submission software
- Excel output and SQL database support available

The screenshot shows the 'SEND Viewer' application window. The title bar reads 'SEND Viewer' and the window content shows a table with columns for patient information and various physiological measurements. The table is titled 'Workstation: (local)PIPipin\_2'. The columns include: STUDYID, DOMAIN, USUBID, CYREQ, CVTESTCD, CVTEST, CVPOS, CVOBRES, CVORRES, CVSTRES, and CVSTRES. The data rows list patient IDs (e.g., P1001, P1002) and their corresponding measurements (e.g., Left Ventricular Systolic Pressure, Heart Rate, Systolic Blood Pressure, Diastolic Blood Pressure, Mean Arterial Pressure, Pulse Pressure, Summary (Mean) Q10 Interval, Left Ventricular Maximum Diastolic Pressure, Left Ventricular Maximum Diastolic Pressure, Summary (Max) Q10 Interval, Summary (Min) Q10 Interval, Left Ventricular Systolic Pressure, Left Ventricular End Diastolic Pressure, Heart Rate, Left Ventricular Maximum Diastolic Pressure, Systolic Blood Pressure, Diastolic Blood Pressure, Mean Arterial Pressure).

Ponemah SEND Viewer

### New Data Security Option

- Control access to your Ponemah system with the new fully digital Data Security Option
- Easily add users and assign access levels from local users to global networks
- Reduce validation efforts without the need for Smart Cards

### Noldus Media Recorder 4.0 Support

- Acquire high quality video recordings from up to 8 cameras with tilt, pan, and zoom functionality
- Supports a wide range of IP, USB, and GigE cameras
- Improved frame rate and resolution management and Picture by Picture output

### Enhancements

- Improved installer and compiler to leverage larger memory for increased performance
- Up to 256 channels and up to 32 groups, dependent on acquisition hardware, now available

### Compatibility

- Support for Windows® 7 SP1 (64 bit) and Windows 10 (64 bit version)
- Support for Microsoft Office 2007 or later (64 bit version)